

SAN FRANCISCO STATE UNIVERSITY



**COLLEGE OF PROFESSIONAL & GLOBAL EDUCATION
2023 — 2024**

Welcome to

SAN FRANCISCO STATE UNIVERSITY

GLOBAL PROGRAMS AT A GLANCE

	Program & Tuition Fees*		Page
1. BUSINESS ADMINISTRATION CERTIFICATE	\$12,648 <i>Full program</i>	\$6,324 <i>Semester</i>	7
2. HOSPITALITY & TOURISM MANAGEMENT CERTIFICATE	\$12,648 <i>Full program</i>	\$6,324 <i>Semester</i>	7
3. INTERNATIONAL BUSINESS CERTIFICATE	\$12,648 <i>Full program</i>	\$6,324 <i>Semester</i>	8
4. LIBERAL & CREATIVE ARTS CERTIFICATE	\$12,648 – \$15,810 <i>Full program</i>	\$6,324 – \$7,905 <i>Semester</i>	8
5. CONDITIONAL ADMISSION - ELIGIBILITY PROGRAM	\$5,995 <i>16-week</i>		9
6. ENGLISH FOR ACADEMIC PREPARATION (EAP)	\$5,995 <i>16-week (Fall/Spring)</i>	\$3,995 <i>10-week (Summer)</i>	10
	\$3,459 <i>8-week (Fall/Spring)</i>	\$2,595 <i>5-week (Summer)</i>	
7. GATEWAY: ENGLISH + UNIVERSITY CREDIT	\$5,995 <i>17-week (Fall/Spring)</i>		10
8. SAN FRANCISCO DISCOVER PROGRAM (NONCREDIT)	Vary by modality <i>(in-person/online) & duration</i>		11
9. SUMMER IN SAN FRANCISCO PROGRAM (CREDIT)	Vary by duration and <i>level of education</i>		12
10. INTERNATIONAL YEAR ONE UNIVERSITY PATHWAY PROGRAM	Vary by number of <i>semesters enrolled</i>		13
11. SUMMER IN SAN FRANCISCO (FOR PARTNERS)	\$1,680 <i>3-week (In-Person)</i>	\$1,185 <i>3-week (Online)</i>	14
12. SEMESTER @ SF STATE	Vary by duration and <i>level of education</i>		14

*All costs and fees are subject to change. For most current fees please refer to cpage.sfsu.edu/global

PUT YOUR PASSION INTO ACTION



At San Francisco State University, we give our students the practical, hands-on experience they need to succeed in their degree programs and careers. Our faculty not only love to teach, but they are also masters in their own fields. The San Francisco Bay Area offers our students endless opportunities to put their passion into action at large multinational corporations, high-tech firms, startups, research laboratories and in diverse industries.

There's a reason our university's motto is

"EXPERIENTIA DOCET,"
or experience teaches.

Number

2

Most affordable college in California
– *University HQ Ranking*

One of the Top

25

"Most Diverse Universities" in the United States
– *USA Today*

Top

5%

Of business schools globally
– *Associate to Advance Collegiate Schools of Business (AACSB) International Accreditation*

Top

25

For film schools in the U.S.
– *Hollywood Reporter*

72

Majors

1500+

International Students

THE GOLDEN CITY



- Walk across the famous Golden Gate Bridge and watch boats sail the bay
- See the sights from a seat on the city's iconic cable cars
- Find the headquarters for big name companies such as Reddit, Gap and Salesforce
- Explore one of the most diverse and inclusive cities in the world
- "Hang ten" on the Pacific Ocean, only one mile from the main campus
- Visit the famous wine regions of Napa and Sonoma



SF STATE IS OVERFLOWING WITH VIBRANT LIFE EVERYWHERE YOU GO



12

Division II Athletic teams

15

Sports Clubs

200+

Student Organizations

Located in what is often cited as America's best city for quality of life, the SF State campus is situated on more than 144 acres in a quiet corner of southwestern San Francisco close to the Pacific Ocean beaches.

In addition, there is a downtown campus located in the heart of the financial and tourist center of San Francisco.



Mashouf Wellness Center



J. Paul Leonard Library

ACADEMIC CERTIFICATE PROGRAMS

Academic certificate programs are a popular option for international students. The University offers professionally designed academic certificate programs in which F-1 visa students can enroll. Semester options are available for select programs.

ADMISSION REQUIREMENTS FOR INTERNATIONAL STUDENTS

- Minimum TOEFL iBT 61, IELTS 6.0 or the equivalent
- Financial statement showing at least one academic year of tuition and living expenses is required
- GPA requirements vary by program

PROGRAM FEES AND COST OF LIVING FOR ONE ACADEMIC YEAR

CERTIFICATE PROGRAM	TUITION & MANDATORY FEES PER ACADEMIC YEAR	LIVING EXPENSES	TOTAL FEES PER ACADEMIC YEAR
Business Administration	\$12,648	\$28,721	\$41,369
International Business	\$12,648	\$28,721	\$41,369
Hospitality & Tourism Management	\$12,648	\$28,721	\$41,369
Liberal & Creative Arts	\$12,648 – \$15,810	\$28,721	\$41,369 – \$44,531

All costs and fees are subject to change.

CERTIFICATE APPLICATION DEADLINES*

Fall Semester: May 15

Spring Semester: November 15

**Applications may be accepted after the deadline on a space-available basis only.*

PATHWAY TO OPTIONAL PRACTICAL TRAINING (OPT)

9 months of full-time study

Semester 1:
Certificate Program
Full-time Study



Semester 2:
Certificate Program
Full-time Study



Optional Practical Training*
Up to 12 Months

OPT:
Work up to
one full year!

The College of Professional & Global Education (CPaGE) offers numerous certificate programs in partnership with the Lam Family College of Business, which has been accredited by the Association to Advance Collegiate Schools of Business (AACSB) International since 1964. The Lam Family College of Business provides a high-quality business education to a diverse learning community through innovative teaching, research and support.

BUSINESS ADMINISTRATION CERTIFICATE

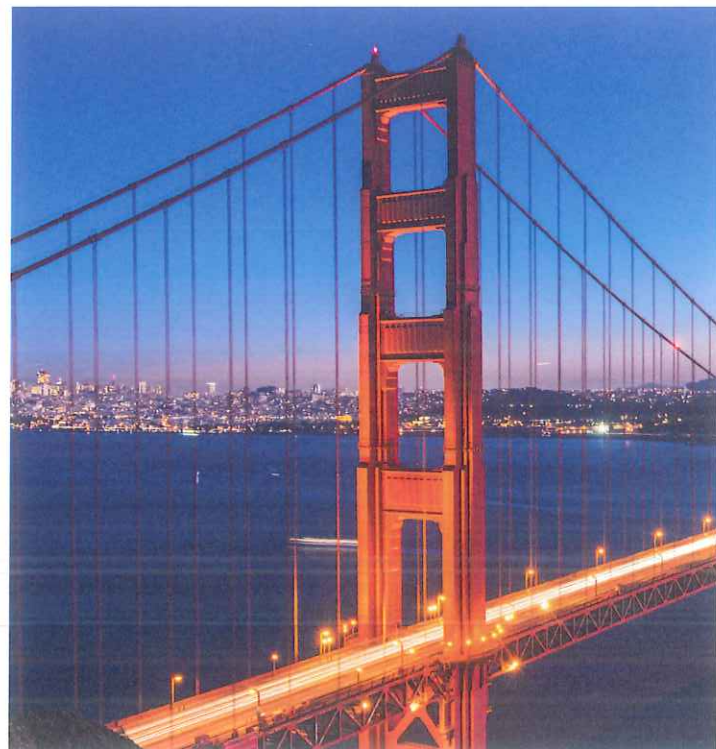
The Business Administration certificate program is designed to give students a broad foundation in business administration in just eight courses. Taking courses in accounting, business communication, statistics, operations management, finance, information systems, management and marketing, graduates will be prepared to enroll in an MBA or an accelerated MBA or launch a career in business. Through SF State activities, students will have opportunities to experience innovation firsthand and network with entrepreneurs, founders, innovators and more.

cpage.sfsu.edu/business-administration

HOSPITALITY & TOURISM MANAGEMENT CERTIFICATE

With the Hospitality & Tourism Management Certificate you'll learn about hotel and restaurant management, revenue cost control and much more. This program provides students with a core of business education and professional management knowledge. Complete the certificate program in two semesters. Or apply for a single semester option that only provides course credit. This certificate includes courses on hospitality and tourism services and management, business communication, restaurant and hotel operations, meeting and event planning, food, wine, culture and the general business of tourism.

cpage.sfsu.edu/hospitality



INTERNATIONAL BUSINESS CERTIFICATE

The International Business Certificate enables students to advance their careers in a wide array of global industries. Our International Business program provides a time-efficient, comprehensive experience to keep you competitive in today's workforce. Learn about multicultural relations, international strategic management and more. Complete the certificate program in two semesters. Or apply for a single semester option that only provides course credit. The certificate requires eight courses total, including the student's selection of three electives. Within two semesters, students can earn their certificate by completing the following:

- Global Strategic Management
- International Business and Multicultural Relations
- International Environmental Analysis
- Plus four electives of your choice
- Seminar in Comparative Management

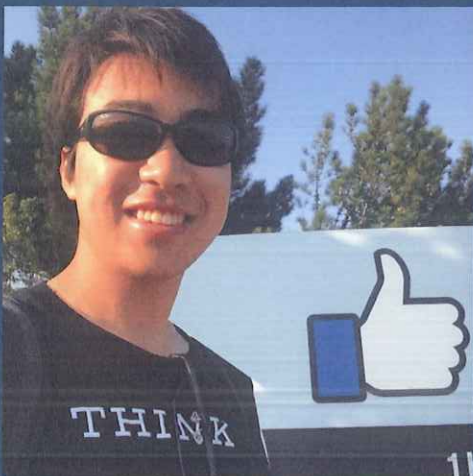
cpage.sfsu.edu/international-business

LIBERAL & CREATIVE ARTS CERTIFICATE

The Certificate in Liberal & Creative Arts exposes students to the liberal and creative arts. Taking a wide range of courses, many of which are also general education courses, students gain broad exposure to the humanities, arts and social sciences. The program may fulfill a gap year, study abroad program, or act as a standalone certificate. Students will complete a total of 24 – 30 units. Students are required to take 9 – 14 units in oral and written communication and critical thinking. In addition, students take 15 – 16 units of electives selected from the following categories:

- Media Arts
- Social Sciences
- Humanities
- Creative and Performing Arts

cpage.sfsu.edu/arts



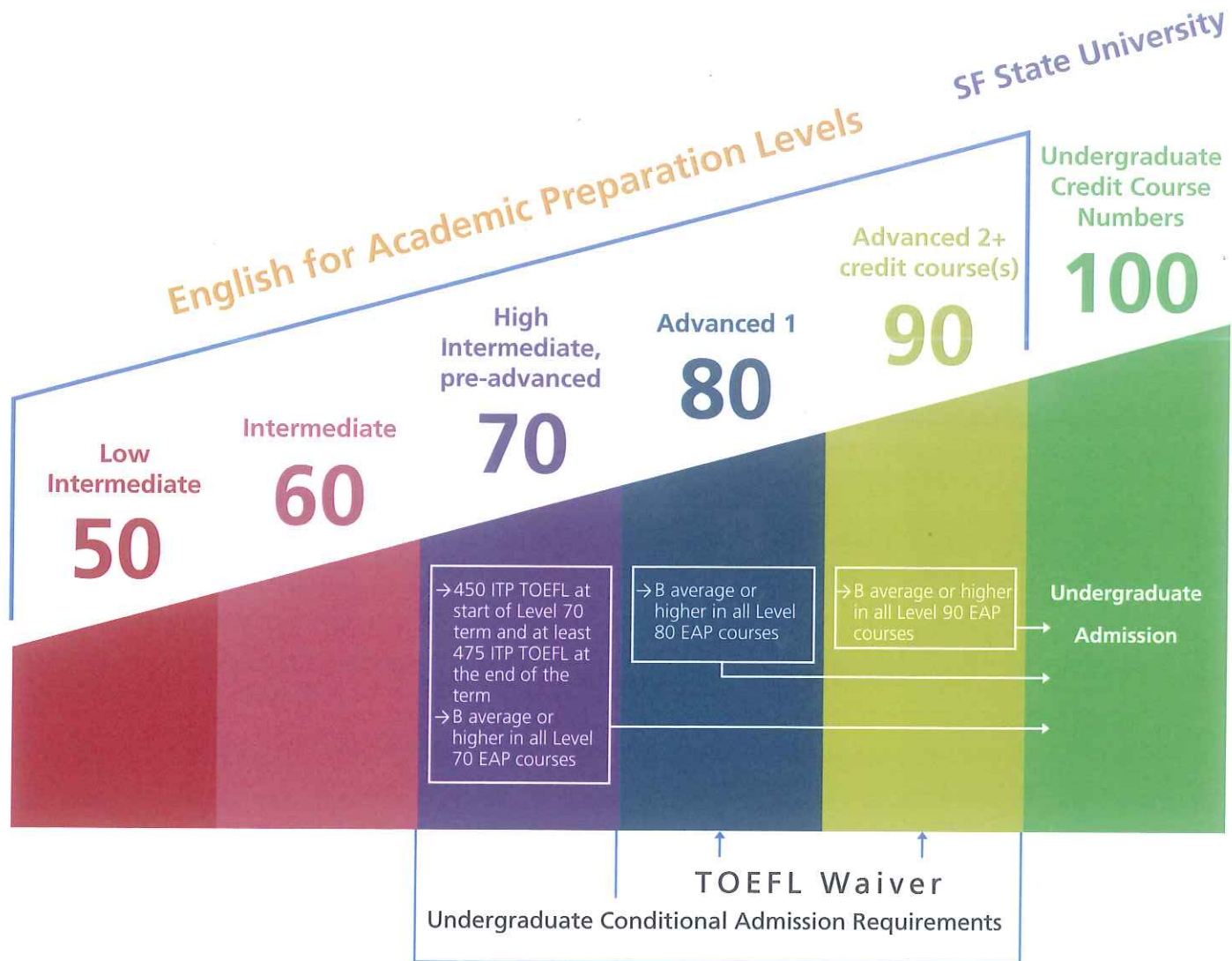
"San Francisco and Silicon Valley are amazing places for people who are involved in the information technology space. Through the International Business program and daily activities, I learned a lot and enhanced my skills. After returning to Japan, I founded my own startup."

Sota Watanabe
Startup Founder
Japan

ENGLISH LANGUAGE PROGRAMS

The American Language Institute (ALI) has been helping international students reach their personal and professional goals since 1961.

cpage.sfsu.edu/ali



CONDITIONAL ADMISSION - ELIGIBILITY PROGRAM

- The EAP program offers academically qualified students who do not meet English proficiency requirement to gain conditional admission
- TOEFL waiver - Admission to degree programs without taking the TOEFL or IELTS
- SF State degree program applications workshops available
- Support from an experienced advisor

cpage.sfsu.edu/eap/conditional

ENGLISH FOR ACADEMIC PREPARATION (EAP)

(NONCREDIT)

Students learn language skills essential for success at an American university. The program develops students' listening, speaking, reading and writing through comprehensive course work. Students gain academic and critical thinking skills. Plus, students get to practice listening and speaking through planned social activities.

Highlights include:

- 20 hours a week of class time in the fall and spring terms; 23+ hours a week in summer terms
- Conditional admission to SF State undergraduate programs
- Conversation Partner Program - get paired with an SF State student
- Diverse electives - Business English, Grammar for Written Expression, Pronunciation, etc.
- Advisors to help with admissions, immigration questions, academics and American life

cpage.sfsu.edu/eap

SESSION	PROGRAM DATES	LENGTH	APPLICATION FEE	TUITION
Summer 2023	May 25, 2023 - August 4, 2023	5 or 10 weeks	\$100	\$2,595 – \$3,995
Fall 2023	August 14, 2022 - December 7, 2023	8 or 16 weeks	\$100	\$3,459 – \$5,995
Spring 2024	January 22, 2024 - May 16, 2024	8 or 16 weeks	\$100	\$3,495 – \$5,995

All costs, fees and dates are subject to change.

GATEWAY: ENGLISH + UNIVERSITY CREDIT STUDIES

(NONCREDIT + CREDIT)

Gateway is our highest Level 90, which allows you to develop your language skills at ALI and take one academic course at SF State.

cpage.sfsu.edu/eap/gateway

SESSION	PROGRAM DATES	LENGTH	APPLICATION FEE	TUITION
Fall 2023	August 14, 2023 – December 15, 2023	17 weeks	\$100	\$5,995
Spring 2024	January 22, 2024 – May 24, 2024	17 weeks	\$100	\$5,995

All costs, fees and dates are subject to change.

Fees include placement testing, TOEFL ITP, orientation



SAN FRANCISCO DISCOVER PROGRAM

IN-PERSON/ONLINE (NONCREDIT)



Exercise your legs and your English skills. San Francisco Discover is a short-term, nonacademic English language program that uses the city of San Francisco as the classroom.

- Visit San Francisco neighborhoods famous for their unique culture, arts, businesses and more
- Witness the influence of innovation and entrepreneurship in every corner of San Francisco
- Practice English with classmates, local people and guest speakers

cpage.sfsu.edu/sfdiscover

WHAT STUDENTS ARE SAYING

"Every week I had so much fun in the classroom and the field trips. The fact that the work program was taken in San Francisco was just perfect."

— Gil Jae Lee, from South Korea



Experience the entrepreneurial & innovative nature of San Francisco



Improve your spoken English



Two- to four-week programs; no student visa required



Offered multiple times throughout the year

PROGRAM DATES AND FEES

SESSION	DATES	DURATION	FEES
Winter	January – February	2 – 4 Weeks	Vary based on modality (online/in-person)
Spring	February – March	2 – 4 Weeks	Vary based on modality (online/in-person)
Summer	July – September	2 – 4 Weeks	Vary based on modality (online/in-person)

Partner university students are eligible for a 10% discount
Applications considered on a space-available basis after deadline
All costs and fees are subject to change

SUMMER IN SAN FRANCISCO

IN-PERSON/ONLINE (CREDIT)

EARN UNIVERSITY CREDIT

- Take two courses of your choice and **A U 110 Living in San Francisco** (seven units total)
- Receive an official SF State transcript
- Earn credits toward your home institution degree (subject to home university approval)

EXPLORE SAN FRANCISCO

- Explore the city with a discounted, unlimited transportation pass
- Visit historic landmarks such as the Golden Gate Bridge, Pier 39, Lands End, the Mission and more
- Explore the geographic, historical and environmental, sociocultural and political context of the Bay Area with your classmates

JOIN THE SF STATE COMMUNITY

- Gain the complete American University experience. Learn and live on campus with local students
- On-campus housing accommodates every student's need, including social activities, Wi-Fi, shared common space and an optional meal plan
- Enjoy the climbing wall, pool, indoor track, fitness classes and more at the Mashouf Wellness Center
- Connect with the SF State community and find lifelong friends

cpage.sfsu.edu/sfsummer

PROGRAM DATES AND FEES

SESSION	PROGRAM DATES	LENGTH	PROGRAM FEES
R1	June 5, 2023 – July 7, 2023	5 or 10 weeks	\$3,360 (in-person/5 weeks)
R3	July 10, 2023 – August 11, 2023		\$6,720 (in-person/10 weeks)
R4	June 5, 2023 – August 11, 2023		\$4,800 (graduate business/5 weeks) \$9,600 (graduate business/10 weeks)

**All costs and fees are subject to change.*

Students may also enroll in an online-only program during any of the summer sessions.

The online program does not include A U 110. The online program is \$395/unit and an I-20 will not be issued.



"Besides realizing my dream to know San Francisco, I was able to learn the history of the city and to improve my English. The teachers are great. They have a lot of teaching experience, and they help a lot when students have difficulties. I've had conversations in Brazil where I've been told how much my English has improved."

Marielle R. Côco
Production Engineer
Brazil

INTERNATIONAL YEAR ONE UNIVERSITY PATHWAY PROGRAM

IN-PERSON (CREDIT & NONCREDIT)

The International Year One University Pathway Program is a way for international students to begin studying for a degree at SF State. It allows students to take a range of first-year academic credit classes while also receiving specialized instruction to improve their English language skills. Students in the program will take a variety of academic courses allowing them to discover new fields and further explore familiar subjects. Upon program completion, students will transfer 18 – 24 credits to their degree program at SF State. Students must complete General Education coursework in English, math and critical thinking and may select electives from communications, economics and history. All students will also participate in an experiential course that helps them acclimate to life in San Francisco.

Applicants are accepted for entry in fall, spring and summer terms.

cpage.sfsu.edu/pathway

ADMISSION REQUIREMENTS

- Demonstrates a minimum English Proficiency of 4.5 IELTS / 45 TOELF iBT (or equivalent)*
- In-country equivalent to 2.5 U.S. grade point average

**Length and course of study determined by English Proficiency score*

PROGRAM COMPLETION REQUIREMENTS

(FOR TRANSFER TO YEAR 2 OF DEGREE PROGRAM):

- Complete a minimum of 18 academic units with a C (2.0) GPA or higher
- Demonstrate English proficiency by earning a 2.0 GPA and a CR or C- or better in ENG 202

PROGRAM LENGTH AND FEES

PROGRAM LENGTH	TUITION*	LIVING EXPENSES	TOTAL FEES
3 Semesters (4.5** entry)	\$30,000	\$28,721	\$58,721
2 Semesters (5.0** entry)	\$27,500	\$28,721	\$56,221
2 Semesters (5.5+** entry)	\$25,000	\$28,721	\$53,721

**Tuition for entire program based on 2022 – 2023 Academic Year*

***Based on IELTS Score (or equivalent)*

APPLICATION DEADLINES

Fall Semester: June 15

Spring Semester: November 24

Summer Semester: April 15

UNIVERSITY PARTNER PROGRAMS

SUMMER IN SAN FRANCISCO

IN-PERSON/ONLINE

- Learn with local students and live the complete American campus life
- Earn course credits and gain an official SF State transcript
- Visit famous San Francisco neighborhoods, experience diverse communities
- Witness the influence of innovation and entrepreneurship of Bay Area life
- Receive an unlimited transportation pass for local buses and light rails

cpage.sfsu.edu/global/partner-universities/sfsummer

PROGRAM DURATION AND FEES

SESSION	LENGTH OF PROGRAM	PROGRAM FEE
1 Academic Course - 3 units*	3 weeks	\$1,185 (Online) \$1,680 (In-Person)

**For Partner Universities only, cohorts of 15 or more (5 week option available to all students. Refer to page 12).
Additional housing fees for students attending in-person classes. Actual fees will depend on accommodations and meal plan selected.
All costs and fees are subject to change.*

SEMESTER @ SF STATE

IN-PERSON/ONLINE

Live in San Francisco, learn from San Francisco, love San Francisco. International students spend 1 – 2 semesters at SF State, jumping into the American University experience.

- Live on the beautiful campus and discover the diverse student body
- Courses from a wide variety of available subjects such as business, technology and liberal arts
- Earn course credits on an official SF State transcript. Earn credits toward your home institution degree (subject to home university approval)
- Academic training (internship) available to eligible students

cpage.sfsu.edu/semester

PRE-MBA PROGRAM

The Pre-MBA program offered through the Lam Family College of Business at SF State is designed for international students from partner universities. The program focuses on creating a strong conceptual and practical foundation for students aiming to pursue an MBA degree on 3+1+1 model. All Pre-MBA students are required to enroll in and pass all required courses in the Business Administration certificate offered to meet the MBA foundation requirement. Students who pass all courses in the program and maintain a 3.0 or higher GPA, plus earn a bachelor's degree from their home university, meet minimum eligibility requirements for the Lam Family College of Business MBA program.

cpage.sfsu.edu/pre-mba

STUDY ABROAD IN SAN FRANCISCO



Our customized programs have tailored instruction based on the needs of the students coming from various international universities. We offer a range of course subjects such as business management, technology, entrepreneurship, teachers training and many more throughout the year. Our teachers and trainers are both seasoned SF State faculty and leading industry experts, ready to engage the class in interactive workshops and provide them with high-quality learning outcomes.

cpage.sfsu.edu/studysf

INTERNATIONAL CUSTOMIZED TRAINING

We design curricula for an organization's specific needs, which may include subject matter in business and management, technology, engineering and sciences. Our trainers are both seasoned SF State faculty and leading industry experts, who deliver high-quality learning outcomes. These learning outcomes include both theoretical understanding of the material, as well as practical knowledge that can be applied to the student's real-life work environment.

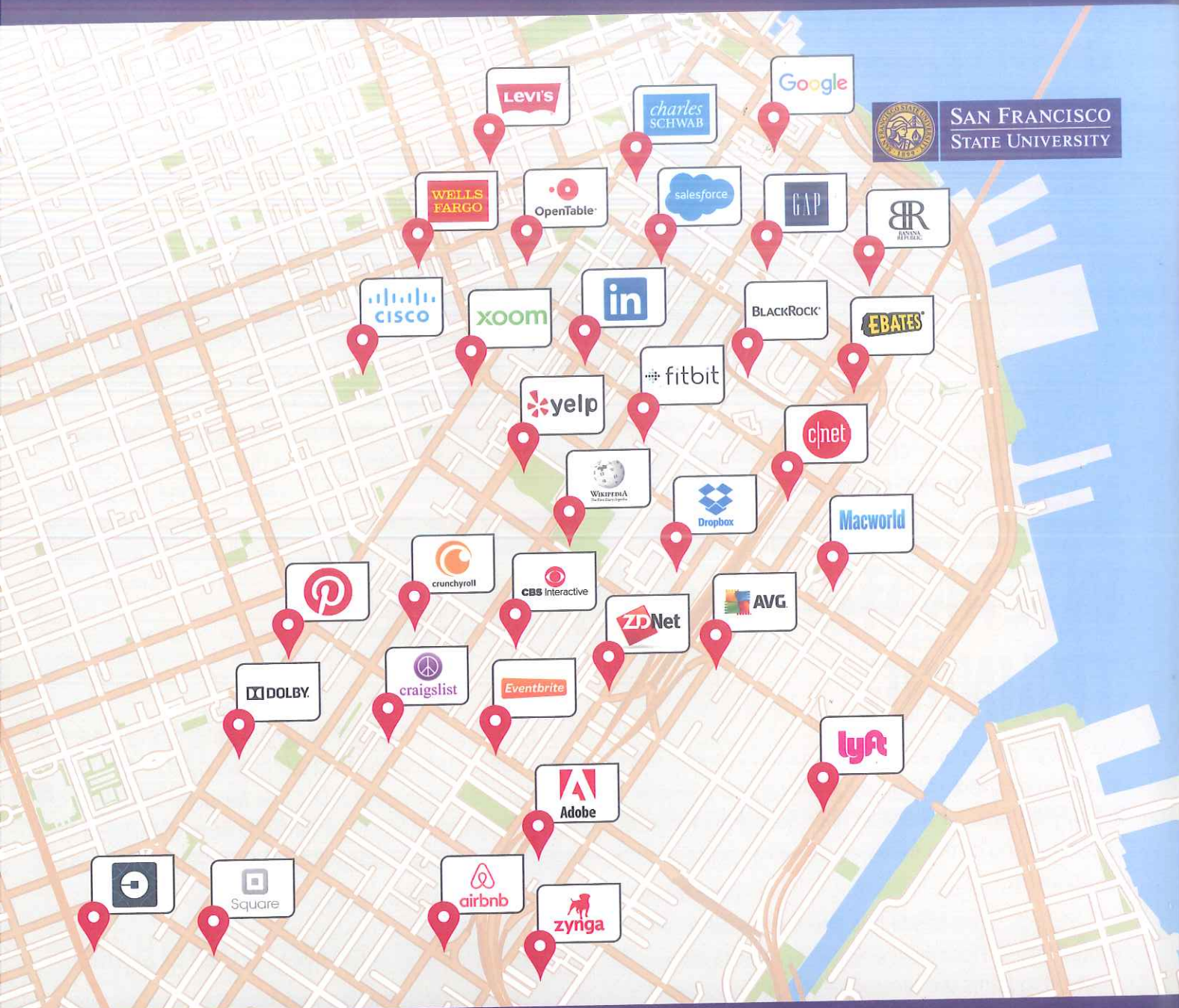
HIGHLIGHTS

- Programs are tailored to your group's needs and can be offered in person or online.
- Curriculum is designed to offer the most current theory and practices in over twenty content areas.
- Professional interpretation is provided when requested.
- SF State has partnerships with a variety of San Francisco Bay Area Fortune 500 and startup companies, government agencies and peer universities. The program includes visits with some of these business, government agencies and university partners.

EXAMPLES OF PROGRAMS OFFERED BY SF STATE:

- Entrepreneurship and New Business Ventures
- English Teacher Training
- Higher Education Administration
- Big Data Analytics and Decision Management
- Public Health and the U.S. Medical System
- Information Technology
- Biology and Life Sciences

cpage.sfsu.edu/international-training



SF STATE CAMPUSES

The Main Campus is located in a quiet and safe neighborhood near the Pacific Ocean.

The Downtown Campus is located in the East Cut, near Google and social media companies, including Reddit, Pinterest and Yelp; and new economy companies, including Airbnb and Uber.

1600 Holloway Avenue, Humanities Building, Room 101, San Francisco, CA 94132
GlobalEd@sfsu.edu | cpage.sfsu.edu/global



**SAN FRANCISCO
STATE UNIVERSITY**

COLLEGE OF PROFESSIONAL
& GLOBAL EDUCATION